

AVID TOURING-S™

Smooth Handling And Durability In Any Season.

Built to deliver exceptional ride quality and stability, the AVID TOURING-S™ delivers confidence for the daily commute. Drivers of today's cars and minivans, can now experience a new level of comfort from the AVID® family's all-season touring tire.

Superior Comfort and Traction

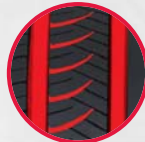
TWIN RAIL STABILITY RIB

Offers better on-center feel and minimizes pattern noise.



TAPERED RAIN CHANNELS

Work in tandem with circumferential grooves to accelerate water evacuation for optimal wet traction.



LUXURY SIDEWALL CONSTRUCTION

Utilizes a tapered, hard rubber insert, twice the height of conventional inserts, for better absorption of bumps and vibrations.



CROSS TRACTION SIPES

Create more biting edges for better traction and handling in wet or wintery conditions.



SILENT SHOULDER

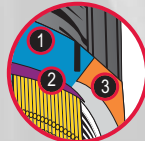
Uses extra sipes and variable tread block sizes to keep road noise low for a quiet, comfortable ride.



Enhanced Durability

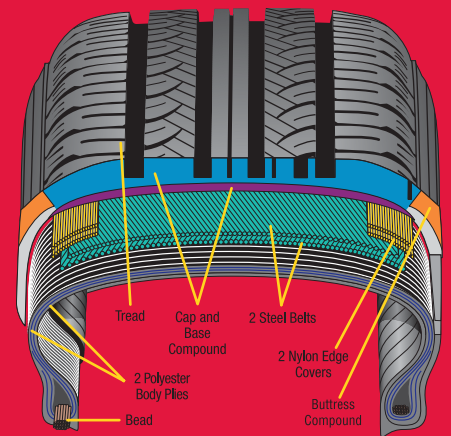
TRI-PLEX TREAD COMPOUND

Provides increased tread life and improved traction through a combination of advanced ①cap, ②base and ③buttress compounds.



CONTOURED BEAD DESIGN

Creates a tighter bead-to-rim fit for increased durability, improved handling and a smoother ride.



Construction may vary by size.

For Vehicles Mentioned Below and Many Others:

Buick LeSabre	Honda CRV
Chevrolet Cavalier	Honda Fit
Chevrolet Cobalt	Mitsubishi Lancer
Chevrolet Malibu	Nissan Altima
Chevrolet Uplander	Nissan Frontier
Chrysler PT Cruiser	Olds Alero
Chrysler Sebring	Pontiac Grand Am
Chrysler Town and Country	Pontiac Grand Prix
Dodge Caravan	Saturn Astra
Dodge Intrepid	Saturn ION
Dodge Stratus	Scion xA/xB
Ford Contour	Toyota Camry
Ford Focus	Toyota Corolla
Ford Freestar	Toyota Echo
Ford Fusion	Toyota Prius
Ford Taurus	Toyota Sienna
Honda Accord	Toyota Tacoma
Honda Civic	Toyota Yaris

Assurance of Value

- 65,000-Mile Limited Treadwear Warranty.
- 620/A/B—Excellent durability and traction.
- Test drive the AVID TOURING-S for 30 days. If not fully satisfied, bring them back for a full refund. See dealer for complete details.





Size Chart

Tire Size	Part No.	UTQG Rating	Unit Weight (lbs.)	Rim Width		Inflated Dimensions				Loaded Dimensions		Max. Load at Cold Inflation Pressure (lbs.@psi)	Load I.D.
				Measuring (Inches)	Approved (Inches)	Overall Width (Inches)	Overall Diameter (Inches)	Tread Width (Inches)	Tread Depth (32/Inch)	Static Radius (Inches)	Revs. Per Mile		
P175/65R14 81S	31801	620/A/B	15.84	5.0	5.0-6.0	7.0	23.1	5.3	10	10.5	900	1019@51	SL
P185/65R14 85S	31802	620/A/B	17.82	5.5	5.0-6.5	7.4	23.5	5.6	10	10.7	885	1124@51	SL
P185/70R14 87S	31803	620/A/B	18.04	5.5	4.5-6.0	7.5	24.3	5.7	10	11.0	856	1201@51	SL
P195/70R14 90S	31804	620/A/B	18.70	6.0	5.0-6.5	8.0	24.8	6.0	10	11.2	837	1312@51	SL
P185/60R15 84T	31805	620/A/B	17.82	5.5	5.0-6.5	7.4	23.7	5.9	10	10.9	875	1102@51	SL
P185/65R15 86S	31806	620/A/B	18.26	5.5	5.0-6.5	7.4	24.4	5.6	10	11.2	850	1168@51	SL
P195/60R15 87T	31807	620/A/B	19.14	6.0	5.5-7.0	7.8	24.3	6.2	10	11.1	856	1190@51	SL
P195/65R15 89S	31808	620/A/B	19.63	6.0	5.5-7.0	8.0	25.0	5.9	10	11.4	831	1279@51	SL
P205/60R15 90T	31820 ●	620/A/B	20.29	6.0	5.5-7.5	8.1	24.7	6.1	10	11.3	840	1301@51	SL
P205/65R15 92S	31809	620/A/B	20.68	6.0	5.5-7.5	8.3	25.4	6.2	10	11.6	818	1400@51	SL
P205/70R15 95S	31810	620/A/B	22.00	6.0	5.0-7.0	8.2	26.4	6.5	10	11.9	787	1499@51	SL
P215/60R15 93T	31811	620/A/B	21.12	6.5	6.0-7.5	8.7	25.1	6.9	10	11.4	827	1411@51	SL
P215/65R15 95S	31812	620/A/B	21.78	6.5	6.0-7.5	8.9	25.9	6.7	10	11.8	801	1510@51	SL
215/70R15 98S	31813	620/A/B	23.76	6.5	5.5-7.0	8.9	26.9	6.9	10	12.1	774	1653@51	SL
P235/75R15 105S	31821 ●	620/A/B	30.64	6.5	6.0-8.0	9.2	28.9	6.2	11	12.9	718	2028@51	SL
P205/55R16 89T	31814	620/A/B	21.34	6.5	5.5-7.5	8.5	24.9	7.0	10	11.5	835	1279@51	SL
P205/60R16 91T	31815	620/A/B	21.34	6.0	5.5-7.5	8.2	25.6	6.5	10	11.8	810	1356@51	SL
P215/60R16 94T	31816	620/A/B	22.22	6.5	6.0-7.5	8.8	26.1	6.9	10	12.0	794	1477@51	SL
215/65R16 98T	31817	620/A/B	24.20	6.5	6.0-7.5	8.7	27.0	6.9	10	12.3	770	1653@51	SL
P215/70R16 99T	31822 ●	620/A/B	25.96	6.5	5.5-7.0	8.7	27.8	6.1	10	12.6	746	1709@51	SL
P225/60R16 97S	31818	620/A/B	24.64	6.5	6.0-8.0	9.0	26.6	7.2	10	12.1	780	1609@51	SL
235/65R16 103T	31824 ●	620/A/B	27.91	7.0	6.5-8.5	9.4	27.9	9.4	10	12.6	744	1929@51	SL
P235/70R16 104T	31823 ●	620/A/B	29.60	7.0	6.0-8.0	9.3	28.9	9.3	11	13.0	719	1984@51	SL
215/60R17 96T	31825 ○	620/A/B	25.88	6.5	6.0-7.5	8.6	27.2	6.5	10	12.8	740	1709@51	SL
215/65R17 99T	31826 ○	620/A/B	26.32	6.5	6.0-7.5	8.6	28.1	6.3	10	12.8	740	1709@51	SL
225/55R17 97T	31827 ○	620/A/B	27.29	7.0	6.0-8.0	9.1	26.8	7.2	10	12.3	776	1609@51	SL
P225/60R17 98T	31819	620/A/B	27.72	6.5	6.0-8.0	8.9	27.7	7.2	10	12.7	749	1653@51	SL
225/65R17 102T	31828 ○	620/A/B	27.95	6.5	6.0-8.0	8.9	28.5	6.5	10	13.0	729	1874@51	SL
235/65R17 104T	31829 ○	620/A/B	29.28	7.0	6.5-8.5	9.4	29.0	6.9	10	13.2	716	1984@51	SL

SL=Standard Load

All available tires are Black Wall

- Available Summer 2010
- Available Fall 2010